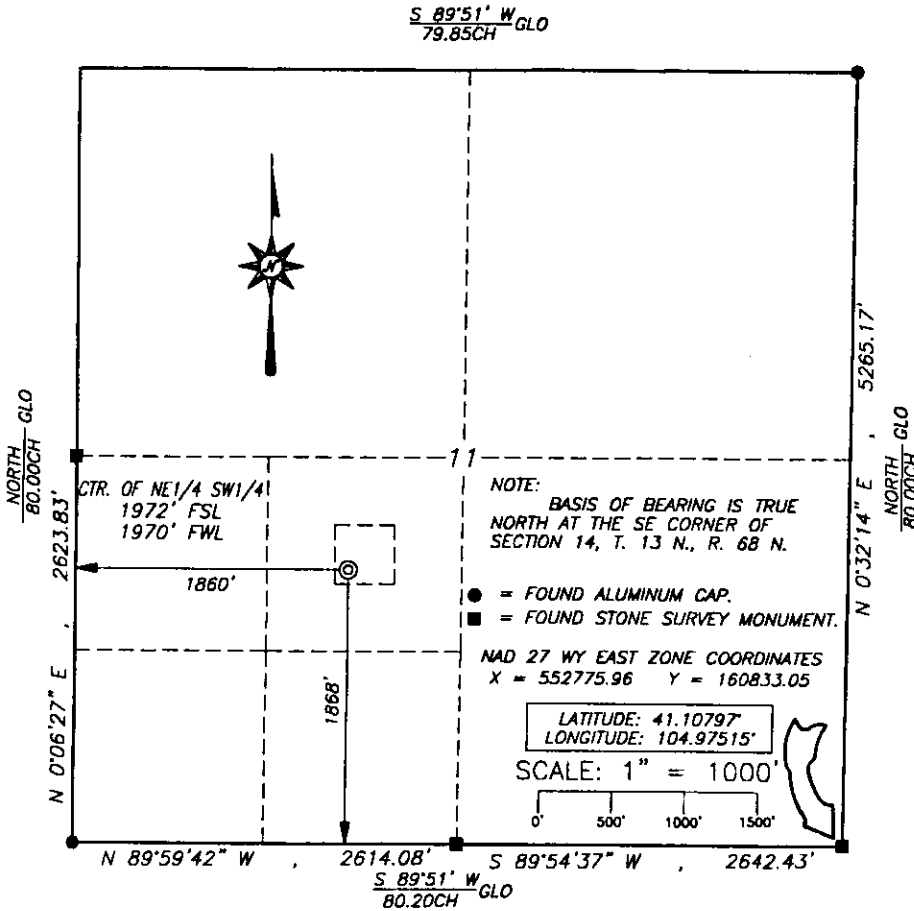


State of Wyoming Corner Record

(In compliance with the *CORNER PERPETUATION AND FILING ACT*, Wyoming Statutes, 1977, Section 36-11-101, et. seq., and the Rules and Regulations of the Board of Registration for Professional Engineers and Professional Land Surveyors)

Reverse side of this form may be used if more space is needed.

Record of original survey and citation of source of historical information (if corner is lost or obliterated). Description of corner monumentation evidence found and/or monument and accessories established to perpetuate the location of this corner. Sketch of relative location of monument, accessories, and reference points with course and distance to adjacent corner(s) (if determined in this survey). Method and rationale for reestablishment of lost or obliterated corner.



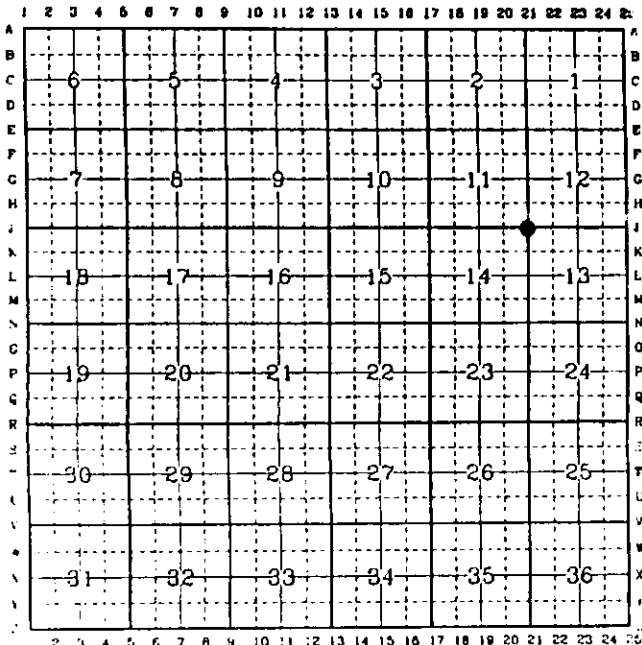
FOUND: GRANITE STONE 16" X 10" X 8" LYING OVER.
4 NOTCH ON SOUTH, 1 NOTCH ON EAST. SHOT
IRON PIPE SET ALONGSIDE.

SET: NOTHING.

RECORDED 5/05/2003 AT 4:35 PM REC# 351322 BK# 1723 PG# 738
DEBRA K. LATHROP, CLERK OF LARAMIE COUNTY, WY PAGE 1 OF 1

Date of Field Work: OCT. 22, 2002 Office Reference: JOB# 93-02

CROSS INDEX DIAGRAM



Firm/Agency, Address

This corner record was prepared by me or under my direction and supervision.

SIEK SURVEYING SERVICE

P.O. Box 1765

CASPER

WY 82602

Telephone Number: (307)266-6829

SEAL & SIGNATURE



Corner Name: SE
SBRPEPLS/PLSW: March 1994

Section: 11 T 13 R 68; 6th P.M. Cross-Index No.: J-21

LARAMIE COUNTY, WY